

Matthys 504

Date of birth: 28 April 2012

Breeder: Stan Derksen, Oosterhout

Owner: Van Manen Brothers, Ede

Lineage: Norbert 444 x Star Pref*5 Beart 411 x Star Krist 358 Model AA x Leffert 306

Pedigree: 2

Kinship: 19.2%

Particulars: none

General

Matthys 504 was approved as a 6-year-old stallion in the autumn of 2018 on the basis of his more than satisfactory, good lineage, good exterior and a very good performance with a lot of aptitude for all disciplines. From his first stud season 120 foals were registered in 2020, with 77% born out of (at minimum) Star mares. Matthys 504 completed his Progeny Test in 2023 based on one year collection of 3-year-old offspring.

Exterior

Uniformity and development of the Matthys 504 offspring is satisfactory. The offspring are breed-typical thanks to their satisfactorily noble heads, light head-neck connections and very long necks, mostly with vertical builds. They have little feathers. Body shape is average with good length in the foreleg. The offspring have little development in the withers and the backs are often weak. Strength of the loin section is satisfactory. The croup is long with satisfactory horizontal build. The horses have dry legwork. They have generous-sized feet and the pasterns are long. Stance of the hind leg is clearly sickle-hocked and in some offspring stance of the foreleg is toeing-out. For a more detailed description of the exterior please consult the breeding values for exterior.

Character/Training report

The Matthys 504 offspring have pleasant, calm but slightly dominant stable manners and are relaxed when being handled. Reliability and sensitivity in the work are satisfactory but they are prone to building up tension. They give good reactions to the aids and have lots of zest for work, perseverance and stamina. They tend to be a little flighty too.

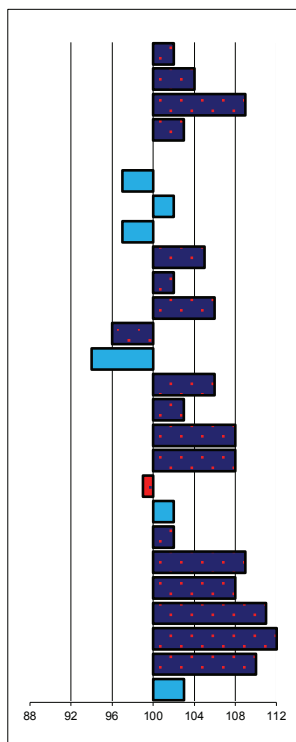
Movement/Performance

When presented in-hand the Matthys 504 offspring show a powerful walk with satisfactory scope. The trot is roomy and powerful with a lot of balance and suppleness. From the Matthys 504 offspring 20 individuals have taken part in ABFP Tests. They show above-average performances under saddle as well as in driven work. Two offspring achieved an AAA score. The Matthys 504 offspring present a variable picture in terms of rhythm and regularity in the walk. They need to develop more scope and use of the body in walk. In trot the offspring display good posture but they lack natural capacity for self-carriage. Their vertical build of the neck slightly disguises the overall picture. In canter too they lack power, they depend a lot on speed. They need more suppleness and capacity for transitions. Three of the tested horses were found to have a deviation in functional movement of the foreleg. They score well on impulsion and rideability. They must learn to move with a more constant rider contact.

Conclusion

Matthys 504 is found to have a more than satisfactory to good hereditary profile for exterior (breeding value total 109; Star% mares 47; Star% stallions 45%). The offspring should be stronger in the connections. In the yard the offspring are relaxed but tend to be a little dominant. In the work they show lots of zest for work and are sensitive but easily tense up. In use they demonstrate a lot of posture and should show more self-carriage (breeding value total 108). The walk needs attention. Based on the overall hereditary profile Matthys 504 is approved on offspring.

head expression	102	plain
head/neck conn..	104	heavy
neck length	109	short
neck conf.	103	horizontal
schoulder conf.	100	steep
back conf.	97	weak
loin conf.	102	weak
croup conf	97	horizontal
croup length	105	short
body	102	downhill
length forearm	106	short
stance foreleg	96	straight
stance hind leg	94	sickle-hocked
pastern length	106	short
shape feet	103	small
quality legwork	108	puffy
colour	108	faded black
feathers	99	little
correct foreleg	102	toeing-in
length of walk	102	short
expression walk	109	weak
length of trot	108	short
movement expr.	111	weak
balance	112	little
suppleness	110	little
size	103	small



noble
light
long
vertical
sloping
tight
tight
sloping
long
uphill
long
standing under
steep
long
large
dry
jet-black
abundant
toeing-out
long
powerful
long
powerful
much
much
tall

Rating characteristics exterior

btbh.%	breeding type	conformation	legwork	total
81	106	108	107	109

Movement/sport aptitude

btbh.%	walk	trot	canter	total	showdriving
73	103	109	106	108	105

Kinship

vw%	variation bloodlines
19,21	92

Breeding values character

btbh.%	reliability/predictability	trainability	Zest for work	stamina
53	100	100	105	105

Breeding values sport

btbh.%	Breeding values
35	109

Inspection results:

Stb no premium	Stb 3rd premium	Star 2nd premium	Star 1st premium	Crown	Star%	Not accepted	Gelding Book	Gb Star	Fb Star	Fb not Star	Studbook	Registered mares	Inspected mares	% inspected	Star% compared to registered	% dams minimum Star
Mares				Geldings		Stallions			Mares							
9	7	13	1	0	47%	1	0	2	17	21	0	64	31	48%	22%	88%

Offspring numbers in ABFP Test:

Age			Gender		Predicate			Total	Result		
3	4	5	stallion	mare	Crown	Star	not Star		A	AA	AAA
20	0	0	7	13	0	8	12	20	7	8	2

Results Performance Test:

Under saddle

walk	trot	canter	posture&balance	suppleness	transitions	impulsion	total
6,3	7,0	6,9	7,0	6,7	6,7	7,2	74,8

In-harness

walk	trot	posture&balance	suppleness	transitions	impulsion	total	Showdriving aptitude
6,2	7,1	7,1	6,9	6,8	7,2	75,7	6,2