

## Teun 505

**Date of birth:** 13 April 2014

**Breeder:** B. Veldhuizen, Putten

**Owner:** T. de Boer, Sintjohannesga

**Lineage:** Bartele 472 x Star Pref\*8 Rindert 406 x Model Sport Pref\*8 Perf\*5 Fabe 348  
x Star Pref\*12 Perf\*3 Feitse 293

**Pedigree:** 50

**Kinship:** 18.8%

**Particulars:** none

### General

Teun 505 was approved in the autumn of 2018 as a 4-year-old stallion, on the basis of his good lineage, his good exterior and good performances. From his first stud season 130 foals were registered in 2020, with 93% born out of (at minimum) Star mares. Teun 505 completed his Progeny Test in 2023 based on one year collection of 3-year-old offspring.

### Exterior

Uniformity of the Teun 505 offspring is satisfactory. They are well-developed horses with correct conformation. The offspring are breed-typical because of their noble heads, light head-neck connections, long necks and abundant feathers. Neck conformation is average. They have remarkably good body shape with good length in the foreleg, strong to tight toplines and long croups with good conformation. Shoulder conformation is mostly steep. The offspring would benefit from more quality in the legwork. The feet should have more size. The pasterns are long. Stance of the hind leg is clearly sickle-hocked and stance of the foreleg is frequently toeing-in. For a more detailed description of the exterior please consult the breeding values for exterior.

### Character/Training report

The Teun 505 offspring are inquisitive horses with very pleasant and calm stable manners. They are very relaxed when handled. Reliability in the work is satisfactory. They are not prone to building up tension, sensitivity is average and they are easy to train. They need to develop a bit more zest for work, perseverance and stamina.

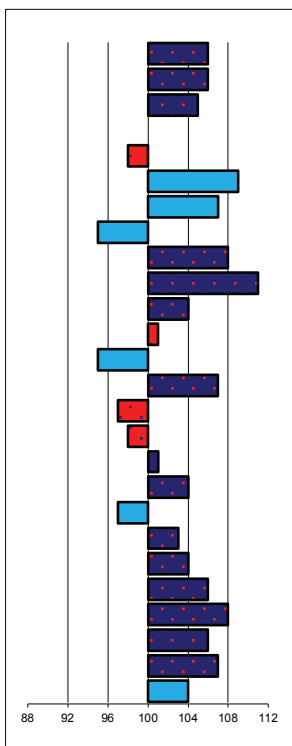
### Movement/Performance

From the Teun 505 offspring 18 individuals have taken part in ABFP Tests and two stallions in the Central Examination 2023. Both under saddle as well as in-harness the offspring present very good performances. Seven offspring have achieved an AAA score. The Teun 505 offspring present a positive picture in the performances and are especially convincing in trot and canter. They stand out with their trainability, lots of suppleness and impulsion as well as good posture and balance in these paces. They demonstrate to have natural capacity for self-carriage. The long hind leg should however, show a little more bend. The canter has strong strides and is variable in terms of capacity for transitions. The walk is a point of attention and in many cases needs more rhythm, scope and use of the body. When presented in-hand the Teun 505 offspring show satisfactory scope and satisfactory power in the walk. The trot is roomy and remarkably powerful with a lot of balance and suppleness.

### Conclusion

Teun 505 has a good hereditary profile for exterior (breeding value total 110; Star% mares 40%; Star% stallions 50%) with a particularly strong improvement in conformation. The offspring demonstrate to have good characters both in the yard as well as in the work. In use they convince in trot and canter with lots of impulsion, balance and suppleness (breeding value total 108). Even though the in-hand walk is satisfactory, this is a point of attention in use. Based on the overall hereditary profile Teun 505 is approved on offspring.

head expression	106	plain
head/neck conn..	106	heavy
neck length	105	short
neck conf.	100	horizontal
schoulder conf.	98	steep
back conf.	109	weak
loin conf.	107	weak
croup conf	95	horizontal
croup length	108	short
body	111	downhill
length forearm	104	short
stance foreleg	101	straight
stance hind leg	95	sickle-hocked
pastern length	107	short
shape feet	97	small
quality legwork	98	puffy
colour	101	faded black
feathers	104	little
correct foreleg	97	toeing-in
length of walk	103	short
expression walk	104	weak
length of trot	106	short
movement expr.	108	weak
balance	106	little
suppleness	107	little
size	104	small



noble
light
long
vertical
sloping
tight
tight
sloping
long
uphill
long
standing under
steep
long
large
dry
jet-black
abundant
toeing-out
long
powerful
long
powerful
much
much
tall

Rating characteristics exterior

btbh.%	breeding type	conformation	legwork	total
83	107	113	104	110

Movement/sport aptitude

btbh.%	walk	trot	canter	total	showdriving
73	103	108	108	108	106

Kinship

vw%	Bloedspreiding
18,8	94

Breeding values character

btbh.%	reliability/predictability	trainability	Zest for work	stamina
51	102	103	100	98

Breeding values sport

btbh.%	Breeding values
31	109

Inspection results:

Stb no premium	Stb 3rd premium	Star 2nd premium	Star 1st premium	Crown	Star%	Not accepted	Gelding Book	Gb Star	Fb Star	Fb not Star	Studbook	Registered mares	Inspected mares	% inspected	Star% compared to registered	% dams minimum Star
Mares							Geldings		Stallions			Mares				
13	16	15	3	1	40%	2	0	0	20	22	2	81	50	62%	23%	95%

Offspring numbers in ABFP Test:

Age			Gender		Predicate			Total	Result		
3	4	5	stallion	mare	Crown	Star	not Star		A	AA	AAA
18	0	0	12	6	1	10	7	18	3	4	6

Results Performance Test:

Under saddle

walk	trot	canter	posture&balance	suppleness	transitions	impulsion	total
6,5	7,1	7,1	7,1	6,8	6,9	7,2	76,4

In-harness

walk	trot	posture&balance	suppleness	transitions	impulsion	total	Showdriving aptitude
6,4	7,2	7,2	6,9	7,0	7,3	76,9	6,4