

Report Progeny Testing

December 2022

Tiede 501

Date of birth: 6 April 2014

Breeder: Johan Onderdijk, Zwolle

Owner: Stud farm Bommelsteijn, Joure

Lineage: Alwin 469 x Star Pref*4 Loadwyk 431 x Star Pref*4 Teunis 332 x Star Pref*5 Feitse 293 (pedigree 8)

Kinship: 18.7%

Particulars: none

General

Tiede 501 was approved at the age of three in the autumn of 2017 on the basis of his good lineage, very good exterior, lots of aptitude for dressage and driving and more than satisfactory aptitude for showdriving. From his first stud season 135 foals were registered, with 90% born out of (at minimum) Star mares. Tiede 501 completed his Progeny Test in 2022 based on one year collection of 3-year-old offspring.

Exterior

The Tiede 501 offspring are a very uniform group with more than satisfactory development and remarkably correct exteriors. They are modern, longlined horses with satisfactory youthful expression. They show very good breed expression with aristocratic heads, light head-neck connections, long, vertical necks and more than satisfactory feathers. They have very correct conformation with striking uphill body shape and strong toplines. They have sloping shoulder conformation, slightly tight backs, strong loin section and good croup conformation with satisfactory length in the croup. They have clean legwork and correct stance of legwork seen from the side. Stance of the foreleg is generally correct, occasionally slightly toeing-out. For a more detailed description of the exterior please consult the breeding values for exterior.

Character/Training report

The Tiede 501 offspring have pleasant and calm stable manners and are people-friendly. Trainability in the work is more than satisfactory. They have good willingness to work but should show a little more perseverance and stamina.

Movement/Performance

When presented in-hand the Tiede 501 offspring demonstrate a roomy, rhythmic and powerful walk. They trot with lots of scope, balance and suppleness and good use of the hind leg. From the Tiede 501 offspring 23 individuals have taken part in ABFP Tests. They show above-average performances under saddle as well as in driven work. Four offspring have achieved a triple A score. The walk is above average. The trot shows satisfactory scope and is light-footed and active. Only one or two individuals lack moment of suspension. In canter many are still struggling with balance.

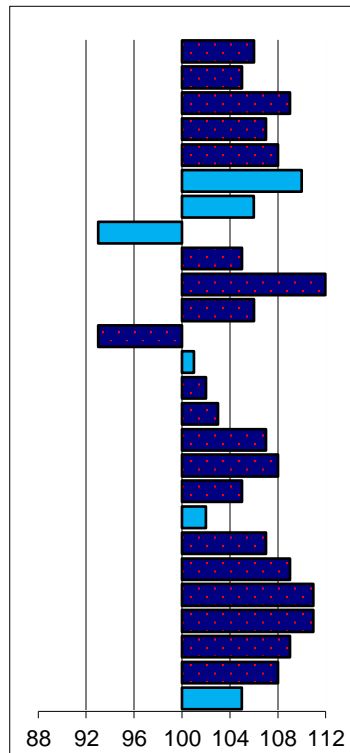
Conclusion

Tiede 501 displays an extraordinarily high all-round hereditary profile (Star% 67 with a large part first-premium mares) and an above-average test result. In terms of character the offspring also make a good impression. Based on the positive profile as described above, Tiede 501 is approved on offspring.

Linear exterior / in-hand movement

expression of the head	106
head-neck connection	105
length of neck	109
neck conformation	107
shoulder conformation	108
back conformation	110
loin conformation	106
croup conformation	93
length of croup	105
body shape	112
length of forearm	106
stance foreleg	93
stance hindleg	101
pastern length	102
shape of feet	103
quality of legwork	107
coat colour	108
feathers	105
correctness foreleg	102
length of strides in walk	107
expression of the walk	109
length of strides in trot	111
movement expression	111
balance	109
suppleness	108
height at withers	105

plain
heavy
short
horizontal
steep
weak
weak
horizontal
short
downhill
short
straight
sickle-hocked
short
small
small
puffy
faded black
little
toeing-in
short
weak
short
weak
little
little
small



noble
light
long
vertical
sloping
tight
tight
sloping
long
uphill
long
standing under
steep
long
large
dry
jet-black
abundant
toeing-out
roomy
powerful
roomy
powerful
much
much
tall

Rating exterior characteristics

btbh.% breeding type
84 **111**

conformation
116

legwork
113

total
117

movement/sport aptitude

btbh.% walk
76 **106**

trot
107

canter
101

total
106

showdriving
99

Kinship

vw% outcrossing
18.7% **95**

Breeding values sport

btbh.% Br. v.
31 **104**

Inspection results:

Stb no premium	Stb 3 rd premium	Star 2 nd premium	Star 1 st premium		Crown	Star%	Not accepted	Gb	Gb Star	Fb Star	Fb not Star	Studbook	Registered mares	Inspected mares	Percentage inspected	Star% compared to non-licensed	Percentage claims minimal Star
				Mares				Geldings		Stallions			Mares				
8	8	17	14		2	67%	2	0	2	28	33	0	74	51	69%	45%	89%

Number of offspring in ABFP test

Age			Gender		Predicate			Total	Result		
3	4	5	stallion	mare	Crown	Star	not Star		A	AA	AAA
23	0	0	10	13	3	9	11	23	6	8	4

Results Performance Test

Under saddle							
walk	trot	canter	posture&balance	suppleness	transitions	impulsion	total
6.6	7.0	6.7	6.8	6.8	6.7	7.0	74.7

In-harness

walk	trot	posture&balance	suppleness	transitions	impulsion	total	showdriving aptitude
6.6	7.0	6.8	6.8	6.6	6.8	74.7	6.1