

Ulbe 506

Date of birth: 13 May 2014
Breeder: H. & J. Jørgensen, Nordborg (Denmark)
Owner: Joe and Kayla Michielli, Moscow (US)
Lineage: Anders 541 x Star Pref*6 Anton 343 x Star Pref*6 Hearke 254 x Star Pref*4 Cobus 246
Pedigree: 10
Kinship: 16.6%
Observations: Positive carrier status dwarfism

General

Ulbe 506 Stb Sport Elite AA was approved as a 3-year-old stallion in the autumn of 2018 on the basis of his good exterior, good lineage, his relatively low kinship of 16.5% and a good performance showing lots of aptitude for all three disciplines. From his first stud season 37 foals were registered in 2020, with 59% born out of at minimum Star mares. After his first two crops of offspring Ulbe 506 could not yet meet the requirements of the Progeny Test and was put on hold in December 2024. In March 2025 the required number of at minimum 20 tested offspring was reached and Ulbe 506 received preliminary approval. By the end of 2025 the mandatory minimum of 40 tested offspring was also reached.

Exterior

The Ulbe 506 could do with a bit more size. They somewhat lack breed expression: on average the heads are noble, the necks need more length and more vertical build. Feathers of the offspring is satisfactory. They have average, slightly downward body shape, satisfactory toplines and good conformation of a slightly short croup. Shoulder conformation is a bit steep. Leg quality is average. The feet are small and the pasterns should be a bit longer. Seen from the side stance of foreleg and hind leg is correct. Stance of foreleg ranges between average and slightly toeing-in. For a more detailed description of the exterior please consult the breeding values for exterior.

Character/Training report

The Ulbe 506 offspring demonstrate above-average stable manners: they are very pleasant, calm, inquisitive and relaxed horses. In the work reliability is satisfactory, they show good trainability and respond well to the aids. Occasionally they are easily distracted. They demonstrate satisfactory perseverance and stamina.

Movement/Performance

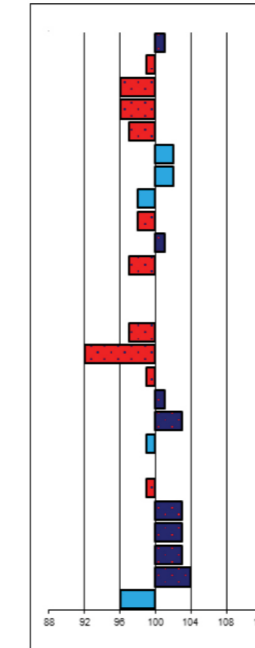
From the Ulbe 506 offspring twenty 3-, 4- and 5-year-old individuals have taken part in ABFP Tests. Under saddle the offspring display below-average performances. In driven work the performance is satisfactory. Three offspring have achieved an AAA score. They display good impulsion and rideability and more than satisfactory capacity for transitions. The walk presents a variable picture across a wide spectrum. A number of horses lacked rhythm in the walk. In the riding test the walk is generally powerful with good ground-coverage. In driven work the walk is average. In trot the offspring come more into their own stride in the in-harness parts, especially in terms of self-carriage, suppleness and posture. The canter is active with satisfactory quality of stride but stays a little bit on the forehand. When presented in-hand the Ulbe 506 offspring present a walk with average scope and power. The trot has satisfactory scope and power with satisfactory balance and suppleness.

Conclusion

Ulbe 506 presents a slightly below-average hereditary profile for exterior (breeding value total 98; Star% mares 36; Star% stallions 38%). The offspring demonstrate to have good characters both in the yard as well as in the work. In use they score slightly below-average in the riding test and slightly above-average in the harness test (breeding value total 97). Based on the overall hereditary profile and his contribution to outcrossing Ulbe 506 is approved on offspring.

linear exterior/in-hand movement

head expression	101	plain
head/neck conn..	99	heavy
neck length	96	short
neck conf.	96	horizontal
shoulder conf.	97	steep
back conf.	102	weak
loin conf.	102	weak
croup conf	98	horizontal
croup length	98	short
body	101	downhill
length forearm	97	short
stance foreleg	100	straight
stance hind leg	100	sickle-hocked
pastern length	97	short
shape feet	92	small
quality legwork	99	puffy
colour	101	faded black
feathers	103	little
correct foreleg	99	toeing-in
length of walk	100	short
expression walk	99	weak
length of trot	103	short
movement expr.	103	weak
balance	103	little
suppleness	104	little
size	96	small



noble
light
long
vertical
sloping
tight
tight
sloping
long
uphill
long
standing under
steep
long
large
dry
jet-black
abundant
toeing-out
long
powerful
long
powerful
much
much
tall

Rating characteristics exterior

btbh.%	breeding type	conformation	legwork	total
75	99	98	98	98

Movement/sport aptitude

btbh.%	walk	trot	canter	total	showdriving
75	97	98	98	97	95

Breeding values sport

btbh.%	Breeding values
33	106

Kinship

vw%	Variation bloodlines
16,6	108

Breeding values character

btbh.%	reliability/predictability	trainability	Zest for work	stamina
50	102	99	102	103

Inspection results:

Stb no premium	Stb 3rd premium	Star 2nd premium	Star 1st premium	Crown	Star%	Not accepted	Gelding Book	Gb not accepted	Gb Star	Fb Star	Fb not Star	Studbook	Registered mares	Inspected mares	% inspected	Star% compared to registered	% dams minimum Star
10	13	12	1	0	36%	1	0	2	1	5	8	0	63	37	59%	21%	63%

Offspring numbers in ABFP Test:

Age			Gender		Predicate			Total	Result		
3	4	5	stallion	mare	Crown	Star	not Star		A	AA	AAA
17	2	1	8	12	1	6	13	20	3	6	3

Results Performance Test:

Under saddle							
walk	trot	canter	posture&balance	suppleness	transitions	impulsion	total
6.4	6.6	6.6	6.6	6.6	6.5	7.0	72.4
In-harness							
walk	trot	posture&balance	suppleness	transitions	impulsion	total	Showdriving aptitude
6.4	6.8	6.9	6.7	6.7	7.1	74.4	5.6