

# Wibout 511

**Date of birth:** 7 May 2015  
**Breeder:** L. Haytema, Wons  
**Owner:** Stal de Mersken, Siegerswoude  
**Owner:** Ganaderos Huastecos SANRO SRL DE C.V., Atizapan de Zaragoza (Mex)  
**Lineage:** Thorben 466 x Star Pref\*3 Doeke 287 x Star Pref\*6 Tjimme 275 x Star\*1 Fokke 217  
**Pedigree:** 34  
**Kinship:** 16.8%  
**Observations:** Knee Osteochondritis off hind C2/B3 (flattening)

## General

Wibout 511 Stb Sport Elite AAA was approved as a 4-year-old stallion in the autumn of 2019 on the basis of his very good exterior, good-quality lineage and his low kinship. In the Central Examination Wibout 511 completed a good under-saddle performance and a more than satisfactory performance for driving- and showdriving work. From his first stud season 63 foals were registered in 2021, with 87% born out of at minimum Star mares. By the end of 2025 a total of nineteen 3- and 4-year-old offspring from two year collections have taken part in progeny testing.

## Exterior

The Wibout 511 offspring are a uniform group of generous, satisfactorily longlined and correctly-built horses with across the board a good size. The offspring slightly lack classy breed expression, the heads should be more aristocratic and head-neck connections are somewhat heavy. The offspring have average length of neck but neck conformation is horizontal. Feathers are strikingly sparse. They have satisfactory uphill body shape with slightly above-average length of forearm. Length and connection of topline is satisfactory. Croup is average in terms of conformation and length. The legwork is of good quality with good pastern length and small feet. Stance of the hind leg is a little sickle-hocked and stance of the foreleg is frequently toeing-in. For a more detailed description of the exterior please consult the breeding values for exterior.

## Character/Training report

The Wibout 511 offspring have very pleasant and calm stable manners and are inquisitive as well as very relaxed horses when being handled. They earn maximum scores for these character traits. The offspring are neither dominant nor cheeky. Reliability in the work is satisfactory, they have a tendency for building up tension but this does not affect trainability. They need to develop a little more zest for work, perseverance and stamina and present satisfactory learning capacity.

## Movement/Performance

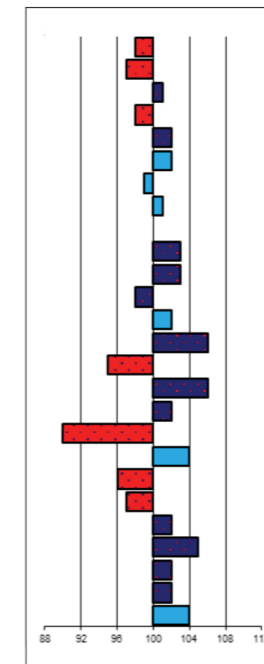
Until now sixteen 3-year-old and three 4-year-old Wibout 511 offspring have completed an ABFP Test. Under saddle the offspring display slightly below-average performances. What especially catches the eye is the variation between scores of offspring and no offspring has achieved an AAA score. Under saddle the walk is short, though active, but they need to develop more use of the body and 11% of offspring lack rhythm. The trot is roomy and active but would generally benefit from more self-carriage and suppleness. The canter shows good scope and activity but remains a bit downhill in body shape. The offspring demonstrate above-average impulsion and rideability. In driven work the offspring display a similar picture in walk and trot as under saddle. This results in more or less the same total scores for in-harness (72.2) as under saddle (72.7). When presented in-hand the Wibout 511 offspring move with a somewhat short walk that slightly lacks expression. The trot has satisfactory scope with strong movement expression and satisfactory balance and suppleness.

## Conclusion

Wibout 511 has a satisfactory hereditary profile (breeding value total 102: Star% mares 37) and strongly improves legwork (breeding value 107) and hereditary profile for breed expression is below average (breeding value 95). The offspring have excellent character and stable manners. In the work the horses show satisfactory reliability and respond well to training. Wibout 511 has a low kinship of 16.8% and is therefore expected to contribute to blood variation. Regulations dictate that Wibout 511 is put on hold because after two year collections he still does not meet the requirements of progeny testing. As soon as the last offspring has been tested he will be re-assessed.

## linear exterior/in-hand movement

head expression	98	plain
head/neck conn..	97	heavy
neck length	101	short
neck conf.	98	horizontal
shoulder conf.	102	steep
back conf.	102	weak
loin conf.	99	weak
croup conf	101	horizontal
croup length	100	short
body	103	downhill
length forearm	103	short
stance foreleg	98	straight
stance hind leg	102	sickle-hocked
pastern length	106	short
shape feet	95	small
quality legwork	106	puffy
colour	102	faded black
feathers	90	little
correct foreleg	104	toeing-in
length of walk	96	short
expression walk	97	weak
length of trot	102	short
movement expr.	105	weak
balance	102	little
suppleness	102	little
size	104	small



noble
light
long
vertical
sloping
tight
sloping
long
uphill
long
standing under
steep
long
large
dry
jet-black
abundant
toeing-out
long
powerful
long
powerful
much
much
tall

## Linear score results for ABFP tests

Stamboekhengst: Wibout 511															
Verervingsbeeld beweging nakomelingen n.a.v. ABFP aanlegtesten															
Rijproef:						Merproef:									
GEMID.	Onderdeel	15	20	25	30	Tot.	GEMID.	Onderdeel	15	20	25	30	Tot.		
23.7	paslengte	3	4	4	5	1	19	22.6	paslengte	1	7	11	0	19	
24.7	activiteit / kracht	0	7	7	4	1	19	25.0	activiteit / kracht	0	4	11	4	0	19
23.4	lichaamsgebruik	2	6	8	2	1	19	23.2	lichaamsgebruik	0	10	6	3	0	19
25.8	ruimte	1	1	11	6	0	19	25.0	ruimte	0	4	11	4	0	19
25.8	activiteit / aldrak	0	3	10	6	0	19	25.8	activiteit / aldrak	0	4	8	7	0	19
23.2	gedragenheid *	1	7	9	2	0	19	23.2	gedragenheid	1	8	7	3	0	19
25.5	soupllesse	1	4	7	6	1	19	24.5	soupllesse	1	5	8	5	0	19
24.7	lichaamhouding	0	5	10	4	0	19	24.5	lichaamhouding	0	7	7	5	0	19
23.9	zweefmoment	1	6	8	4	0	19	23.4	zweefmoment	0	7	9	3	0	19
24.7	ruimte	1	6	5	7	0	19	Galop: n.v.t.							
25.3	activiteit	0	4	10	5	0	19								
25.3	sprong	0	6	6	7	0	19								
23.7	soupllesse	0	9	7	2	1	19								
22.9	lichaamhouding	1	7	10	1	0	19								
23.4	zweefmoment	1	8	6	4	0	19								
24.5	Schakelen - overgangen	0	3	15	1	0	19								
24.2	Schakelen - tempowissel.	1	3	13	2	0	19								
27.9	impuls	0	8	11	0	0	19								
27.6	Rijdbaarheid	0	1	7	11	0	19								
25.3	Schakelen - overgangen	1	1	13	4	0	19								
25.3	Schakelen - tempowissel.	1	1	13	4	0	19								
27.9	impuls	1	0	5	13	0	19								
27.6	Rijdbaarheid	1	0	6	12	0	19								

## Rating characteristics exterior

btbh. %	breeding type	conformation	legwork	total
79	95	102	107	102

## Movement/sport aptitude

btbh. %	walk	trot	canter	total	showdriving
75	104	96	97	99	93

## Breeding values sport

btbh. %	Breeding values
31	97

## Kinship

vv%	Variation bloodlines
16,8	106

## Breeding values character

btbh. %	reliability/predictability	trainability	Zest for work	stamina
54	95	101	96	97

## Inspection results:

Stb no premium	Stb 3rd premium	Star 2nd premium	Star 1st premium	Crown	Star%	Not accepted	Gelding Book	Gb Star	Fb Star	Fb not Star	Studbook	Registered mares	Inspected mares	% inspected	Star% compared to registered	% dams minimum Star
8	18	12	2	1	37%	0	0	1	13	11	0	76	41	54%	20%	82%

## Offspring numbers in ABFP Test:

Age	Gender	Predicate	Total	Result
3	stallion	Star	1	A
4	mare	not Star	8	AA
5	stallion	Star	1	AAA
16	stallion	not Star	10	
3	mare	not Star	9	

## Results Performance Test:

Under saddle							
walk	trot	canter	posture&balance	suppleness	transitions	impulsion	total
6.3	6.7	6.6	6.6	6.6	6.5	6.9	72.7
In-harness							
walk	trot	posture&balance	suppleness	transitions	impulsion	total	Showdriving aptitude
6.2	6.6	6.6	6.5	6.6	6.9	72.2	5.1