

# Willem 508

**Date of birth:** 5 May 2015  
**Breeder:** W.E. Lokhorst, Ederveen  
**Owner:** Galloper Stud, Berkel en Rodenrijs  
**Lineage:** Hette 518 x Star Pref\*4 Folkert 353 x Star\*2 Tsjomme 329 x Model\*3 Oege 267  
**Pedigree:** 61  
**Kinship:** 18.5%  
**Observations:** Positive carrier status dwarfism. Both sides osteochondrosis (OCD) in the fetlock joints, grade D

## General

Willem 508 Stb Sport AAA was approved as a 3-year-old in 2018 on the basis of his more than satisfactory lineage, good exterior, more than satisfactory aptitude for riding- and driving horse and satisfactory aptitude for showdriving. From his first stud season 30 foals were registered in 2021 with 88% born out of at minimum Star mares. Willem 508 completed the performance part of his Progeny Test in 2024 on the basis of two year collections of 3- and 4-year-old offspring. To date Willem 508 has not yet met the requirement of forty inspected offspring needed for permanent approval. Presently 33 offspring have been inspected.

## Exterior

The Willem 508 offspring are a satisfactorily uniform batch of well-developed horses with correct builds and a good foundation. The offspring would benefit from a stronger breed expression. The horses would especially benefit from more feathers and a deeper black coat colour. Body shape is satisfactorily horizontal with good length in the foreleg. The offspring have satisfactory strength in the back with a well-connected loin section and noticeably good croup conformation. Their croups are long. The horses have dry legwork. Seen from the side stance of the foreleg is remarkably straight. Stance of foreleg ranges between correct and slightly toeing-in. Stance of the hind leg is satisfactory. Shape of the feet and pastern length are average. For a more detailed description of the exterior please consult the breeding values for exterior.

## Character/Training report

In the yard the Willem 508 offspring are inquisitive, slightly dominant and cheeky but also relaxed when handled. In the work they are a bit sensitive and easily tense up. They should volunteer more zest for work and be more responsive to the aids. They also score below-average on stamina and perseverance, the offspring are rather easily distracted and they could score better on learning capacity.

## Movement/Performance

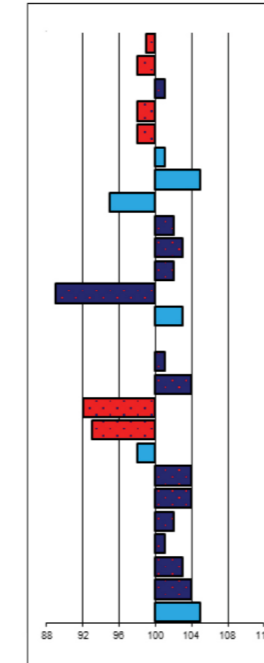
From the Willem 508 offspring 19 individuals have taken part in ABFP Tests. Both in the riding- and driving test the offspring present average performances, but they generally do better in the riding parts. Two offspring have achieved an AAA score. In the riding test a third of the offspring struggled with rhythm in the walk. In trot the hind leg should step further under the body. In the riding test the offspring need to develop more use of the body in both walk and trot and more capacity for transitions. The canter shows satisfactory scope, activity and quality of stride. When presented in-hand the Willem 508 offspring display a roomy and powerful walk. The trot is roomy and remarkably powerful with distinctly good balance and suppleness.

## Conclusion

Willem 508 has a satisfactory hereditary profile (breeding value exterior total 101; Star% mares 55%; Star% stallions 42%) with the strong loin section and good croup conformation catching the eye. The offspring are somewhat dominant and cheeky when handled and in the work score a fraction below-average in terms of character. With the in-hand presentation the offspring demonstrate a good walk and trot. The offspring present satisfactory scores in their performances (breeding value movement / sport aptitude total 105). Based on the satisfactory overall hereditary profile Willem 508 remains preliminary approved on offspring with a stud limitation of 75.

## linear exterior/in-hand movement

|                  |     |               |
|------------------|-----|---------------|
| head expression  | 99  | plain         |
| head/neck conn.. | 98  | heavy         |
| neck length      | 101 | short         |
| neck conf.       | 98  | horizontal    |
| shoulder conf.   | 98  | steep         |
| back conf.       | 101 | weak          |
| loin conf.       | 105 | weak          |
| croup conf       | 95  | horizontal    |
| croup length     | 102 | short         |
| body             | 103 | downhill      |
| length forearm   | 102 | short         |
| stance foreleg   | 89  | straight      |
| stance hind leg  | 103 | sickle-hocked |
| pastern length   | 100 | short         |
| shape feet       | 101 | small         |
| quality legwork  | 104 | puffy         |
| colour           | 92  | faded black   |
| feathers         | 93  | little        |
| correct foreleg  | 98  | toeing-in     |
| length of walk   | 104 | short         |
| expression walk  | 104 | weak          |
| length of trot   | 102 | short         |
| movement expr.   | 101 | weak          |
| balance          | 103 | little        |
| suppleness       | 104 | little        |
| size             | 105 | small         |



|                |
|----------------|
| noble          |
| light          |
| long           |
| vertical       |
| sloping        |
| tight          |
| sloping        |
| long           |
| uphill         |
| long           |
| standing under |
| steep          |
| long           |
| large          |
| dry            |
| jet-black      |
| abundant       |
| toeing-out     |
| long           |
| powerful       |
| long           |
| powerful       |
| much           |
| much           |
| tall           |

## Rating characteristics exterior

| btbh.% | breeding type | conformation | legwork | total |
|--------|---------------|--------------|---------|-------|
| 71     | 98            | 100          | 104     | 101   |

## Movement/sport aptitude

| btbh.% | walk | trot | canter | total | showdriving |
|--------|------|------|--------|-------|-------------|
| 74     | 105  | 105  | 102    | 105   | 99          |

## Breeding values sport

| btbh.% | Breeding values |
|--------|-----------------|
| 34     | 100             |

## Kinship

| vw%  | Variation bloodlines |
|------|----------------------|
| 18,5 | 96                   |

## Breeding values character

| btbh.% | reliability/predictability | trainability | Zest for work | stamina |
|--------|----------------------------|--------------|---------------|---------|
| 59     | 96                         | 96           | 90            | 92      |

## Inspection results:

| Stb no premium | Stb 3rd premium | Star 2nd premium | Star 1st premium | Crown    | Star% | Not accepted | Gelding Book | Gb Star | Fb Star | Fb not Star | Studbook | Registered mares | Inspected mares | % inspected | Star% compared to registered | % dams minimum Star |
|----------------|-----------------|------------------|------------------|----------|-------|--------------|--------------|---------|---------|-------------|----------|------------------|-----------------|-------------|------------------------------|---------------------|
| Mares          |                 |                  |                  | Geldings |       | Stallions    |              |         | Mares   |             |          |                  |                 |             |                              |                     |
| 5              | 4               | 8                | 1                | 2        | 55%   | 1            | 0            | 0       | 5       | 7           | 0        | 71               | 21              | 30%         | 15%                          | 46%                 |

## Offspring numbers in ABFP Test:

| Age |   |   | Gender   |      | Predicate |      |          | Total | Result |    |     |
|-----|---|---|----------|------|-----------|------|----------|-------|--------|----|-----|
| 3   | 4 | 5 | stallion | mare | Crown     | Star | not Star |       | A      | AA | AAA |
| 19  | 0 | 0 | 10       | 9    | 1         | 8    | 10       | 19    | 6      | 6  | 2   |

## Results Performance Test:

| Under saddle |      |                 |                 |             |             |           |                      |
|--------------|------|-----------------|-----------------|-------------|-------------|-----------|----------------------|
| walk         | trot | canter          | posture&balance | suppleness  | transitions | impulsion | total                |
| 6.7          | 6.9  | 6.8             | 6.8             | 6.8         | 6.7         | 7.2       | 74.9                 |
| In-harness   |      |                 |                 |             |             |           |                      |
| walk         | trot | posture&balance | suppleness      | transitions | impulsion   | total     | Showdriving aptitude |
| 6.3          | 6.8  | 6.7             | 6.6             | 6.6         | 6.8         | 72.9      | 5.5                  |